

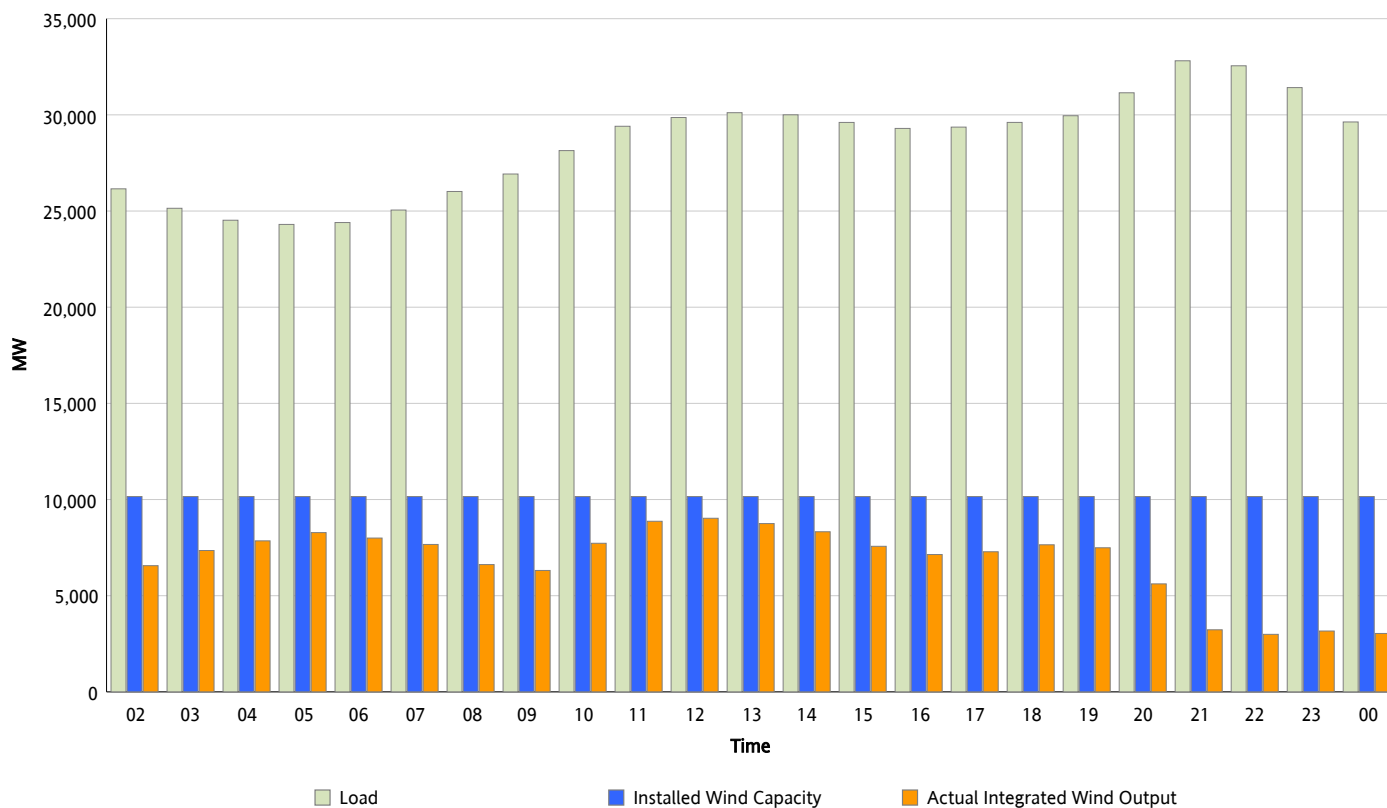


ERCOT Grid Operations

Wind Integration Report : 03/10/2013

Peak Load	32,813 MW
Load Peak Hour (HE)	21
Wind Over Peak	3,228 MW
Wind Record 02/09/13	9,481 MW
Max Wind Value*	9,117 MW
Wind Peak Time	11:41
Wind Integration %	30.51 %

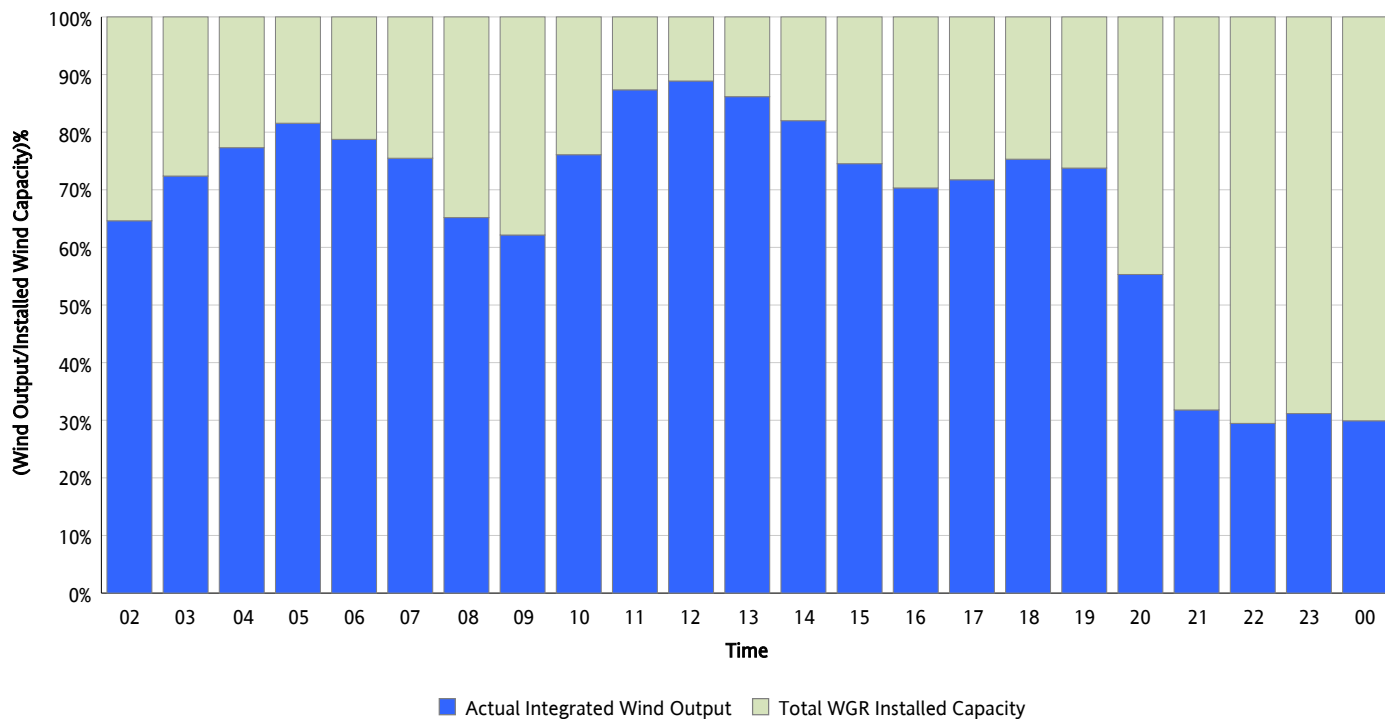
Hourly Average Actual Load vs. Actual Wind Output
03/10/2013



** Wind Record and Wind Max represent instantaneous values and the rest of the values are integrated over the hour*

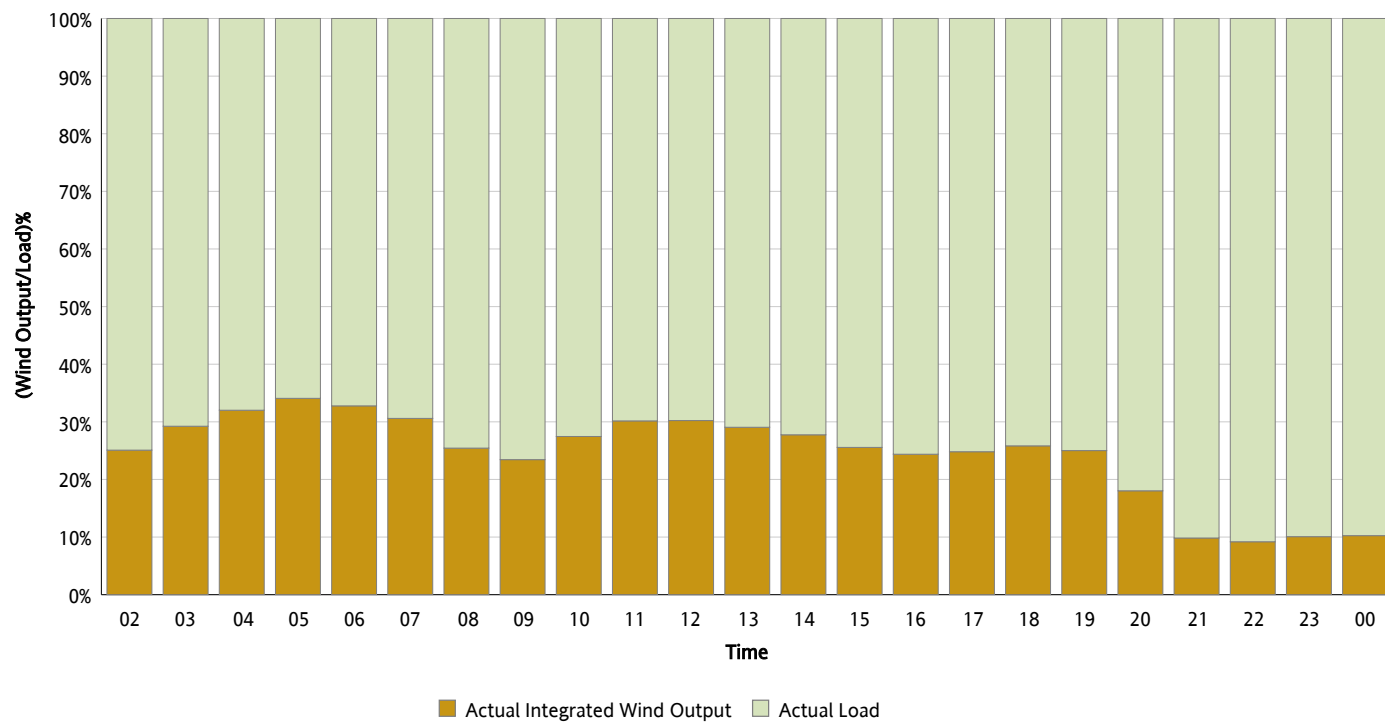
Actual Wind Output as a Percentage of the Total Installed Wind Capacity

03/10/2013



Actual Wind Output as a Percentage of the ERCOT Load

03/10/2013



ERCOT Load vs. Actual Wind Output

03/03/2013 - 03/10/2013

